

Focus Flex L19



Light Efficiency:

17 Lumen/Watt

Light Quality:

CRI: 57.8

Color Temperature:

4281 K

Output: 4205 lm

Peak: 62146 cd

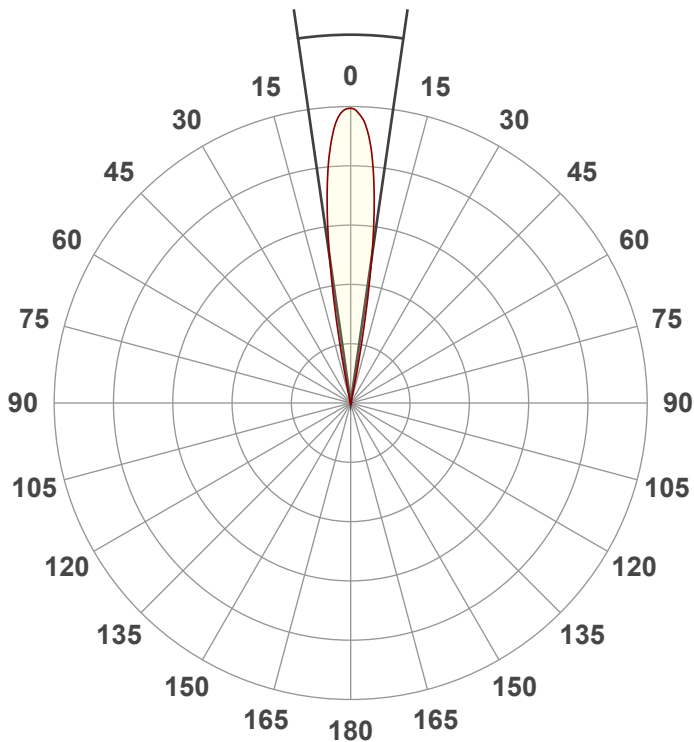
Power: 245 W

PF: 1.0



Beam Angle

16.4°



Test:

Lime Zoom 16

Date:

10/26/2022

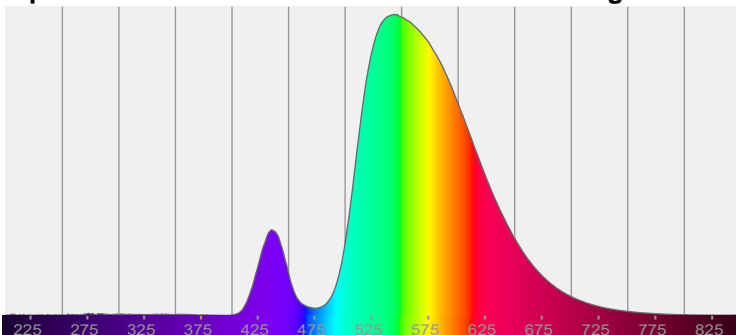
Note:



CIE 1931
x: 0.398
y: 0.502

Spectra

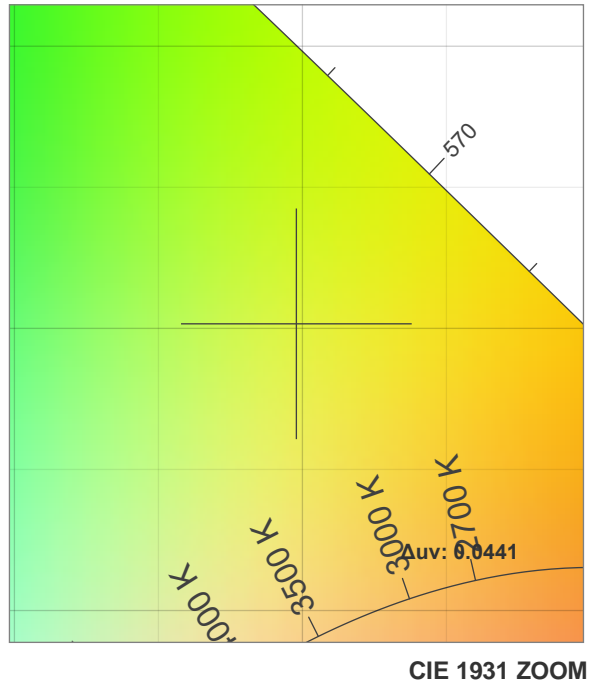
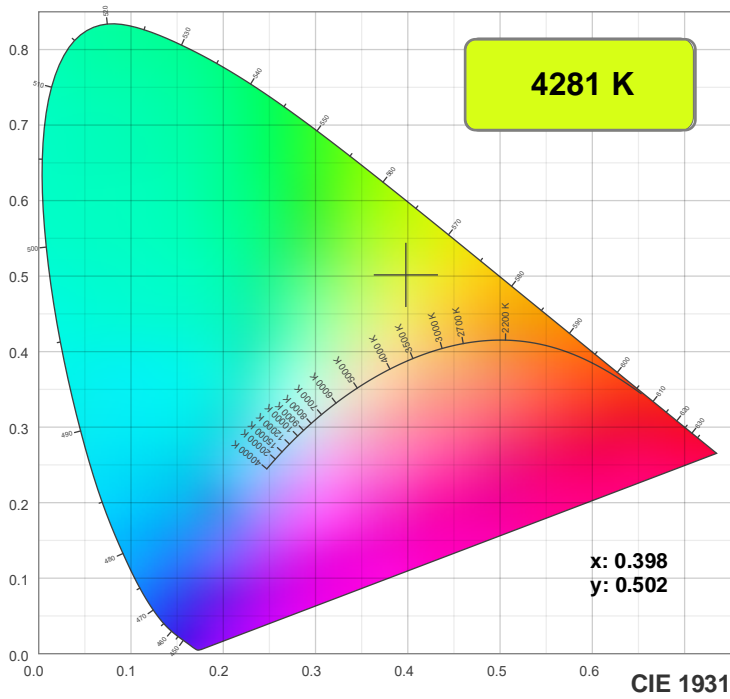
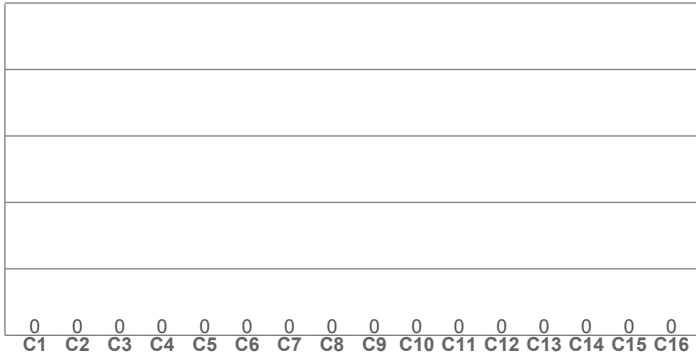
Dominant Wavelength: 568nm



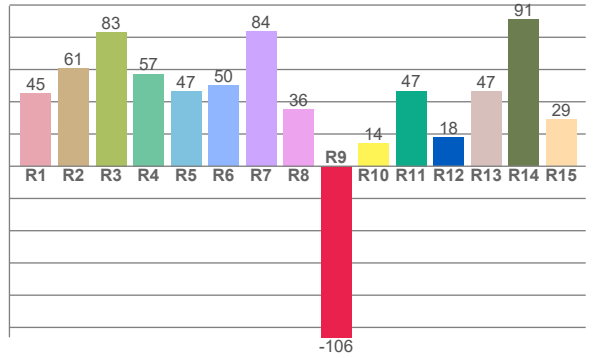
Power

Voltage: 116 V
Current: 2.12 A
Frequency: 0 Hz

Color Details

**TM30: 0.0**

CRI: 57.8 (R1-R8)



CRI R values, only R1-R8 are used to calculate final CRI value

R1	R2	R3	R4	R5	R6	R7	R8	R9	R10	R11	R12	R13	R14	R15
45.1	60.6	83.3	57.3	46.7	50.1	83.6	35.5	-106.1	14.4	46.8	18.0	46.6	91.0	29.1

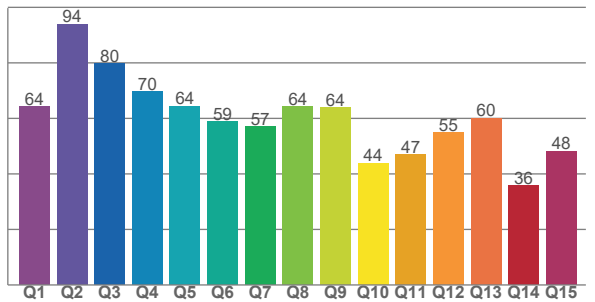
TM30 C values, 16 binned values out of total of 99 C values

[illegible]

CQS Q values

Q1	Q2	Q3	Q4	Q5	Q6	Q7	Q8	Q9	Q10	Q11	Q12	Q13	Q14	Q15
64.2	94.0	79.8	69.6	64.4	58.9	57.0	64.3	63.8	43.9	47.0	54.8	60.1	35.7	48.2

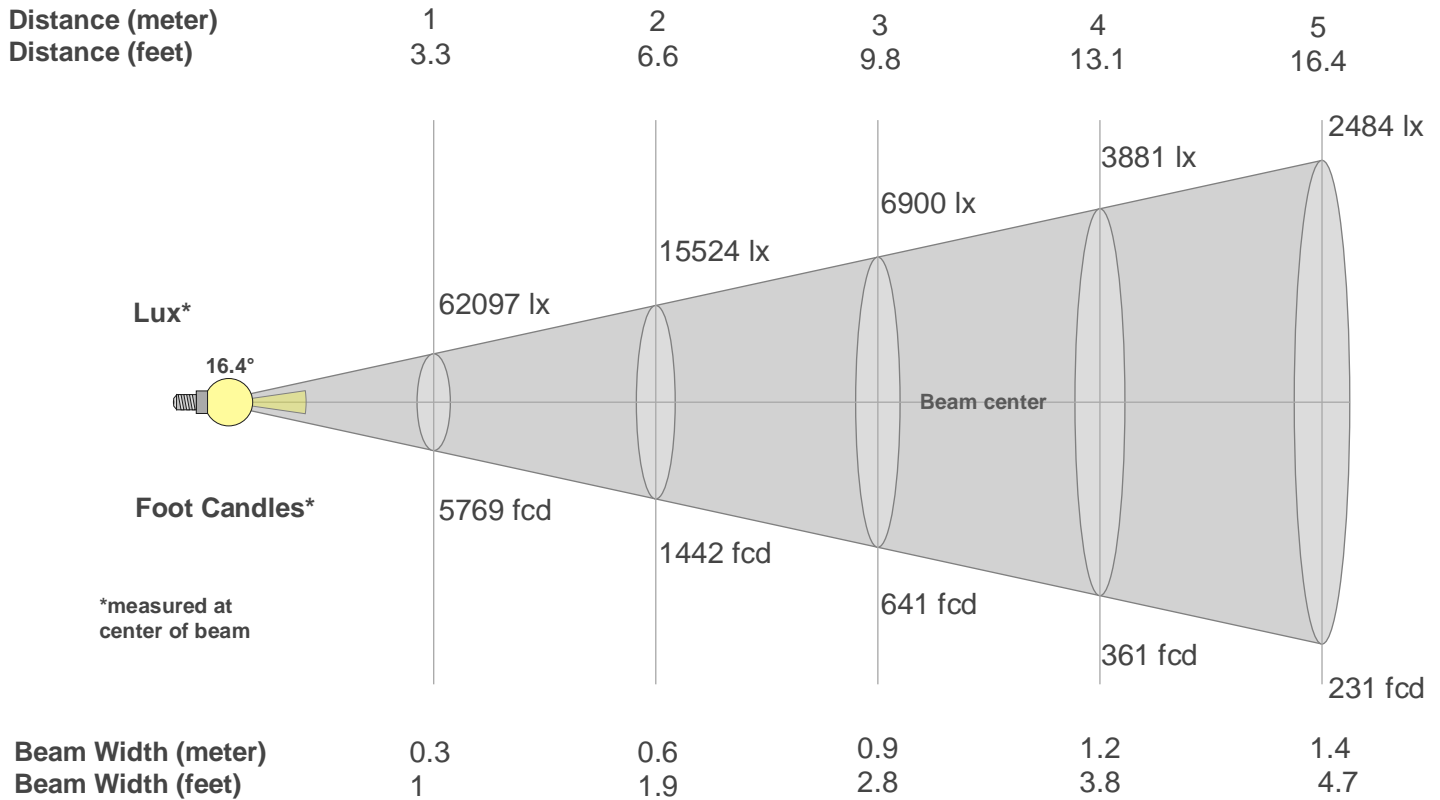
CQS: 58.0



Color Parameters

Color Temperature	Color Rendering Index	Red Component	Color Fidelity	Color Gamut	Color Quality Scale	Color Coordinate CIE 1931	Color Coordinate CIE 1931	Color Coordinate	Color Coordinate	Color Diviation from Black Body
CCT	CRI	CRI R9	TM30 Rf	TM30 Rg	CQS	x	y	u	v	Δuv
4281 K	57.8	-106.1	0.0	n/a	58.0	0.398	0.502	0.194	0.366	0.0441

Beam Details



Beam Intensities from 1-20m

m	1	2	3	4	5	6	7	8	9	10	11	12	13	14	15	16	17	18	19	20
ft	3.3	6.6	9.8	13.1	16.4	19.7	23	26.2	29.5	32.8	36.1	39.4	42.7	45.9	49.2	52.5	55.8	59.1	62.3	65.6
lx	62097	15524	6900	3881	2484	1725	1267	970	767	621	513	431	367	317	276	243	215	192	172	155
fcd	5769	1442.2	641	360.6	230.8	160.2	117.7	90.1	71.2	57.7	47.7	40.1	34.1	29.4	25.6	22.5	20	17.8	16	14.4

Intensities in 0° C-plane

0°	1°	2°	3°	4°	5°	6°	7°	8°	9°	10°	11°	12°	13°	14°	15°	16°	17°	18°	19°
62.1K	61.9K	61.0K	59.2K	56.1K	52.1K	46.9K	40.5K	32.8K	24.3K	15.8K	8.4K	3.4K	1.0K	0.2K	0.1K	0.0K	0.0K	0.0K	0.0K
100%	100%	98%	95%	90%	84%	75%	65%	53%	39%	25%	14%	5%	2%	0%	0%	0%	0%	0%	0%

Intensities in 90° C-plane

0°	1°	2°	3°	4°	5°	6°	7°	8°	9°	10°	11°	12°	13°	14°	15°	16°	17°	18°	19°
62.1K	61.9K	61.0K	59.2K	56.1K	52.1K	46.9K	40.5K	32.8K	24.3K	15.8K	8.4K	3.4K	1.0K	0.2K	0.1K	0.0K	0.0K	0.0K	0.0K
100%	100%	98%	95%	90%	84%	75%	65%	53%	39%	25%	14%	5%	2%	0%	0%	0%	0%	0%	0%

Intensities in 180° C-plane

0°	1°	2°	3°	4°	5°	6°	7°	8°	9°	10°	11°	12°	13°	14°	15°	16°	17°	18°	19°
62.1K	61.7K	60.5K	58.8K	55.9K	51.9K	46.7K	40.4K	32.9K	24.4K	15.7K	8.4K	3.3K	0.8K	0.2K	0.1K	0.0K	0.0K	0.0K	0.0K
100%	99%	97%	95%	90%	84%	75%	65%	53%	39%	25%	14%	5%	1%	0%	0%	0%	0%	0%	0%

Intensities in 270° C-plane

0°	1°	2°	3°	4°	5°	6°	7°	8°	9°	10°	11°	12°	13°	14°	15°	16°	17°	18°	19°
62.1K	61.7K	60.5K	58.8K	55.9K	51.9K	46.7K	40.4K	32.9K	24.4K	15.7K	8.4K	3.3K	0.8K	0.2K	0.1K	0.0K	0.0K	0.0K	0.0K
100%	99%	97%	95%	90%	84%	75%	65%	53%	39%	25%	14%	5%	1%	0%	0%	0%	0%	0%	0%

Beam Angle 50%	Field Angle 10%	Cutoff Angle 2,5%	Intensity Ratio in 120° Cone	Intensity Ratio in 90° Cone
16.4°	22.7°	25.2°	100.0%	99.9%